

Bay Residence E Floors 8 - 36 2 Bedrooms + Family 3.5 Baths 2,347 Sq Ft / 218 Sq M Interior 471 Sq Ft / 44 Sq M Exterior

North ↑



\* On level 8 & 9 the column in bedroom 2 is slightly larger. Level 8 has a larger exterior 518 Sq Ft / 48 Sq M.



Biscayne Bay

DEVELOPED BY OKO GROUP Cain International OB GROUP

EXCLUSIVE MARKETING AND SALES BY FORTUNE DEVELOPMENT SALES

MISSONI baia MIAMI RESIDENCES

All depictions of matters of detail shown hereon, including, without limitation, items of finish, furniture and decoration, are conceptual only and are not necessarily included in the Unit. For a correct representation of the items included in the Unit, see the Purchase Agreement. Stated dimensions shown hereon are approximate and are measured to the exterior face of exterior walls and to the center line of demising walls. This method of measurement varies from, and is larger than, the dimensions that would be determined by using the description and definition of the "Unit" set forth in the Declaration (which generally only includes the interior airspace between the perimeter walls and excludes interior structural components). Note that measurements of rooms set forth on this floor plan are generally taken at the greatest points of each given room (as if the room were a perfect rectangle), without regard for any cutouts. Accordingly, the area of the actual room will typically be smaller than the product obtained by multiplying the stated length times width. All dimensions are approximate and may vary with actual construction.



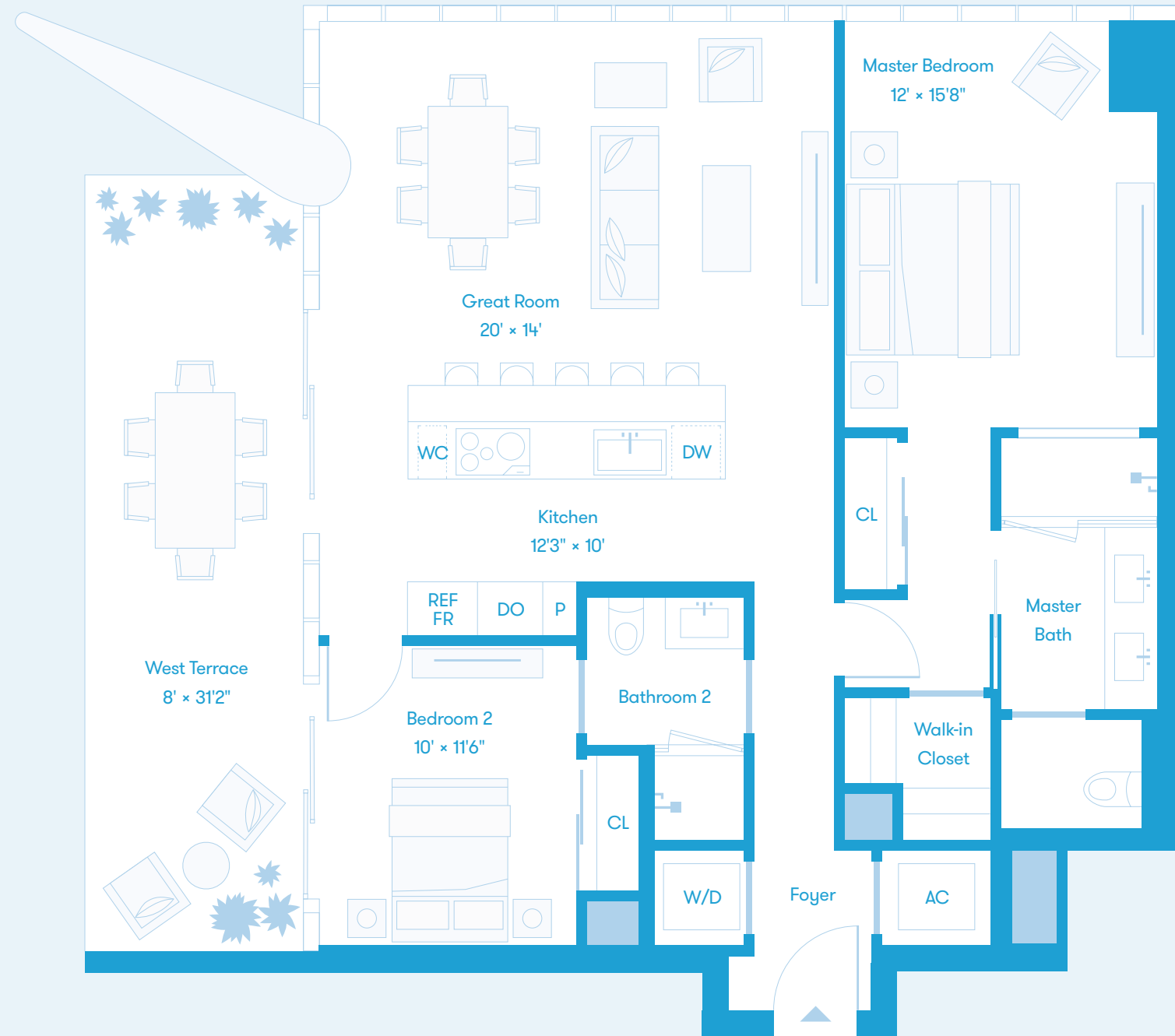
\* Level 8 has a larger exterior 446 Sq Ft / 41 Sq M.



Biscayne Bay



\* Level 8 has an extended balcony totaling 1,312 Sq Ft / 122 Sq M.



Biscayne Bay

Bay Residence S Floors 8 - 36 1 Bedroom 1 Bath 775 Sq Ft / 72 Sq M Interior 60 Sq Ft / 6 Sq M Exterior

North ↑



Biscayne Bay

DEVELOPED BY OKO GROUP Cain International OB GROUP

EXCLUSIVE MARKETING AND SALES BY FORTUNE DEVELOPMENT SALES

MISSONI baia MIAMI RESIDENCES

All depictions of matters of detail shown hereon, including, without limitation, items of finish, furniture and decoration, are conceptual only and are not necessarily included in the Unit. For a correct representation of the items included in the Unit, see the Purchase Agreement. Stated dimensions shown hereon are approximate and are measured to the exterior face of exterior walls and to the center line of demising walls. This method of measurement varies from, and is larger than, the dimensions that would be determined by using the description and definition of the "Unit" set forth in the Declaration (which generally only includes the interior airspace between the perimeter walls and excludes interior structural components). Note that measurements of rooms set forth on this floor plan are generally taken at the greatest points of each given room (as if the room were a perfect rectangle), without regard for any cutouts. Accordingly, the area of the actual room will typically be smaller than the product obtained by multiplying the stated length times width. All dimensions are approximate and may vary with actual construction.



\* Level 8 has a larger exterior 386 Sq Ft / 36 Sq M.



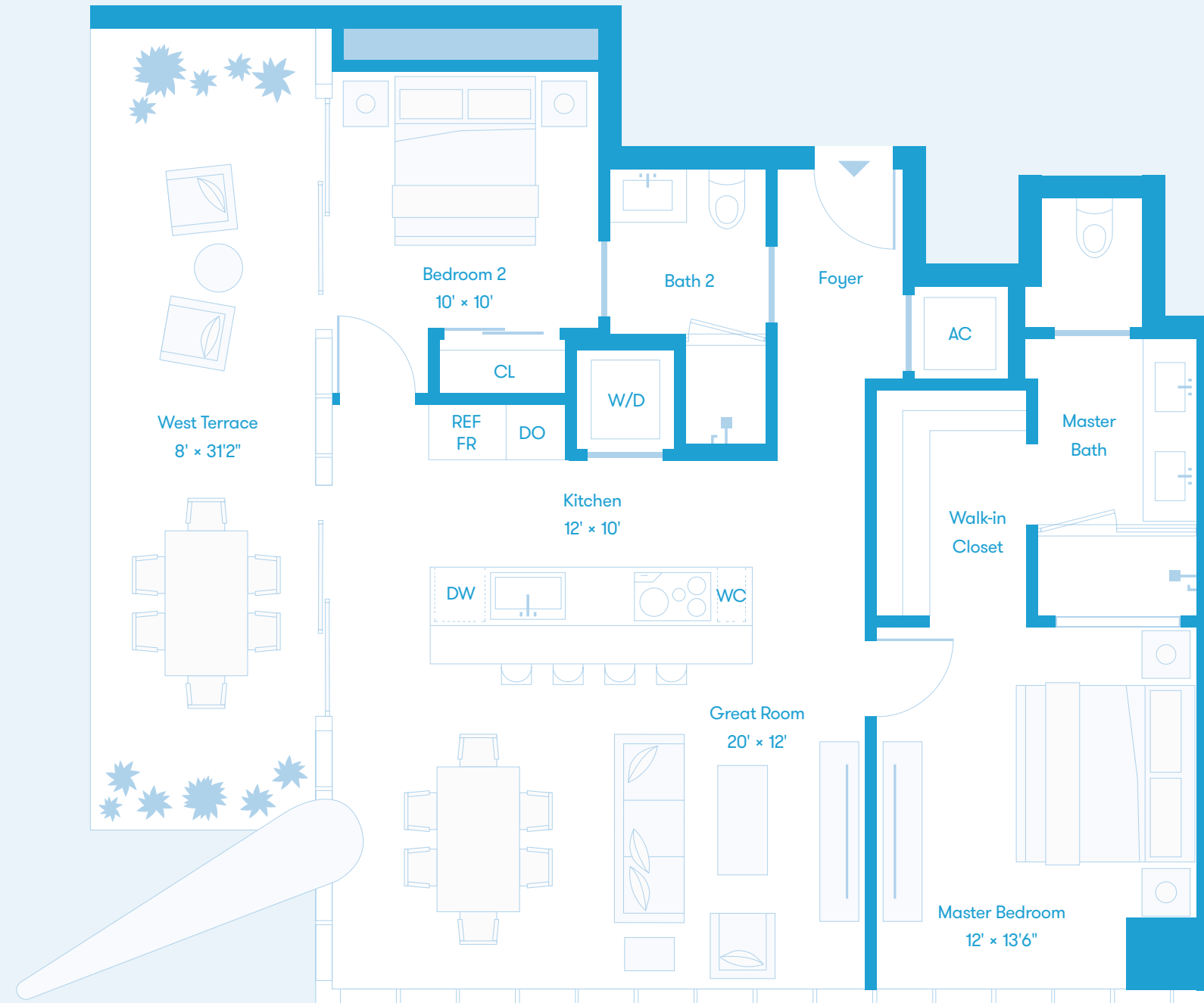
Biscayne Bay

Bay Residence SW Floors 8 - 36 2 Bedrooms 2 Baths 1,080 Sq Ft / 100 Sq M Interior 239 Sq Ft / 22 Sq M Exterior

North ↑



\* Level 8 has an extended balcony totaling 1,312 Sq Ft / 122 Sq M.



Biscayne Bay

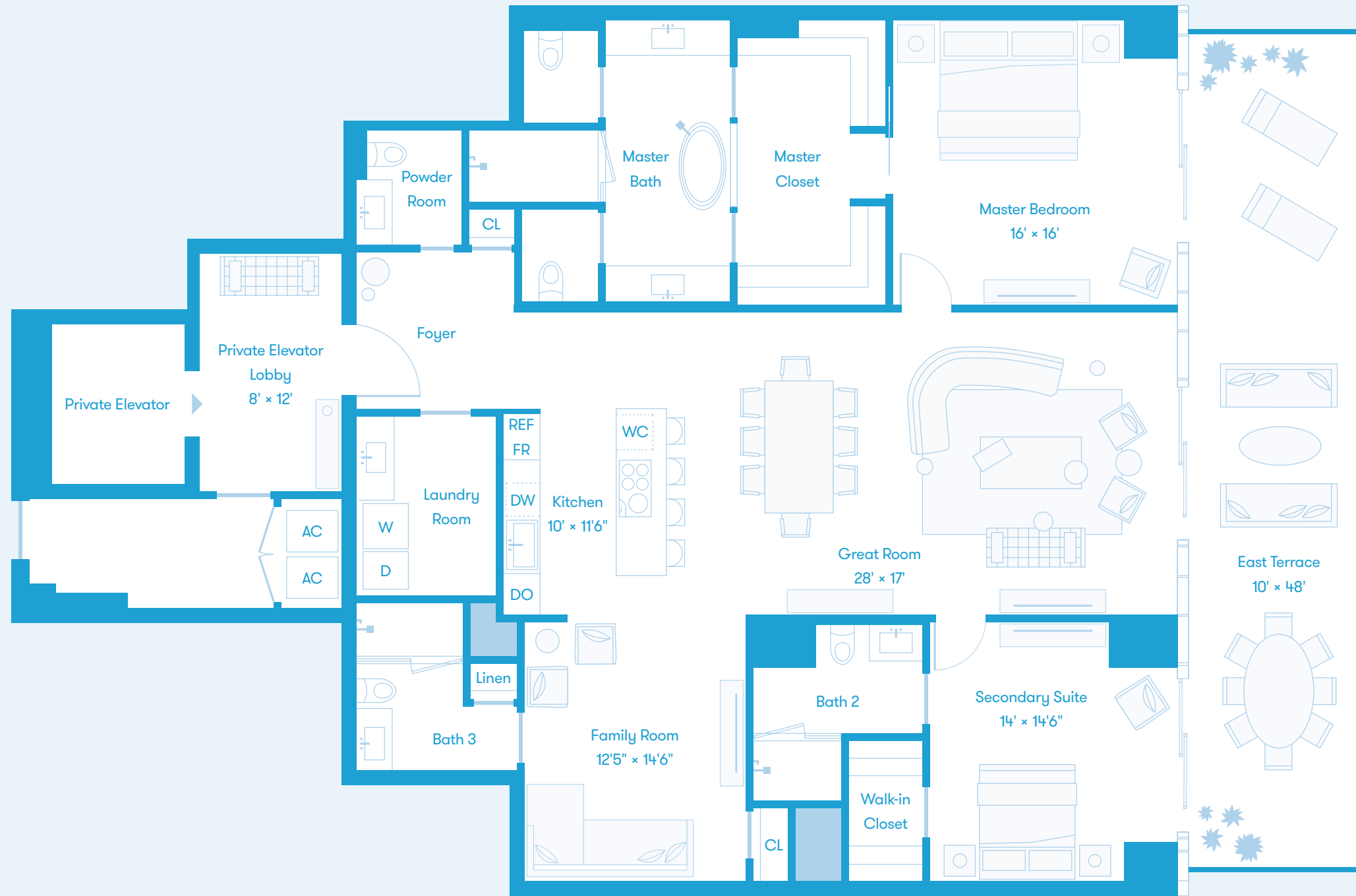
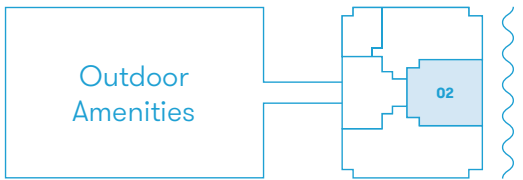
DEVELOPED BY OKO GROUP Cain International OB GROUP

EXCLUSIVE MARKETING AND SALES BY FORTUNE DEVELOPMENT SALES

MISSONI baia MIAMI RESIDENCES

All depictions of matters of detail shown hereon, including, without limitation, items of finish, furniture and decoration, are conceptual only and are not necessarily included in the Unit. For a correct representation of the items included in the Unit, see the Purchase Agreement. Stated dimensions shown hereon are approximate and are measured to the exterior face of exterior walls and to the center line of demising walls. This method of measurement varies from, and is larger than, the dimensions that would be determined by using the description and definition of the "Unit" set forth in the Declaration (which generally only includes the interior airspace between the perimeter walls and excludes interior structural components). Note that measurements of rooms set forth on this floor plan are generally taken at the greatest points of each given room (as if the room were a perfect rectangle), without regard for any cutouts. Accordingly, the area of the actual room will typically be smaller than the product obtained by multiplying the stated length times width. All dimensions are approximate and may vary with actual construction.

Tower Residence E Floors 38 - 56 2 Bedrooms + Family 3.5 Baths 2,464 Sq Ft / 229 Sq M Interior 471 Sq Ft / 44 Sq M Exterior North ↑



Biscayne Bay

DEVELOPED BY OKO GROUP Cain International OB GROUP

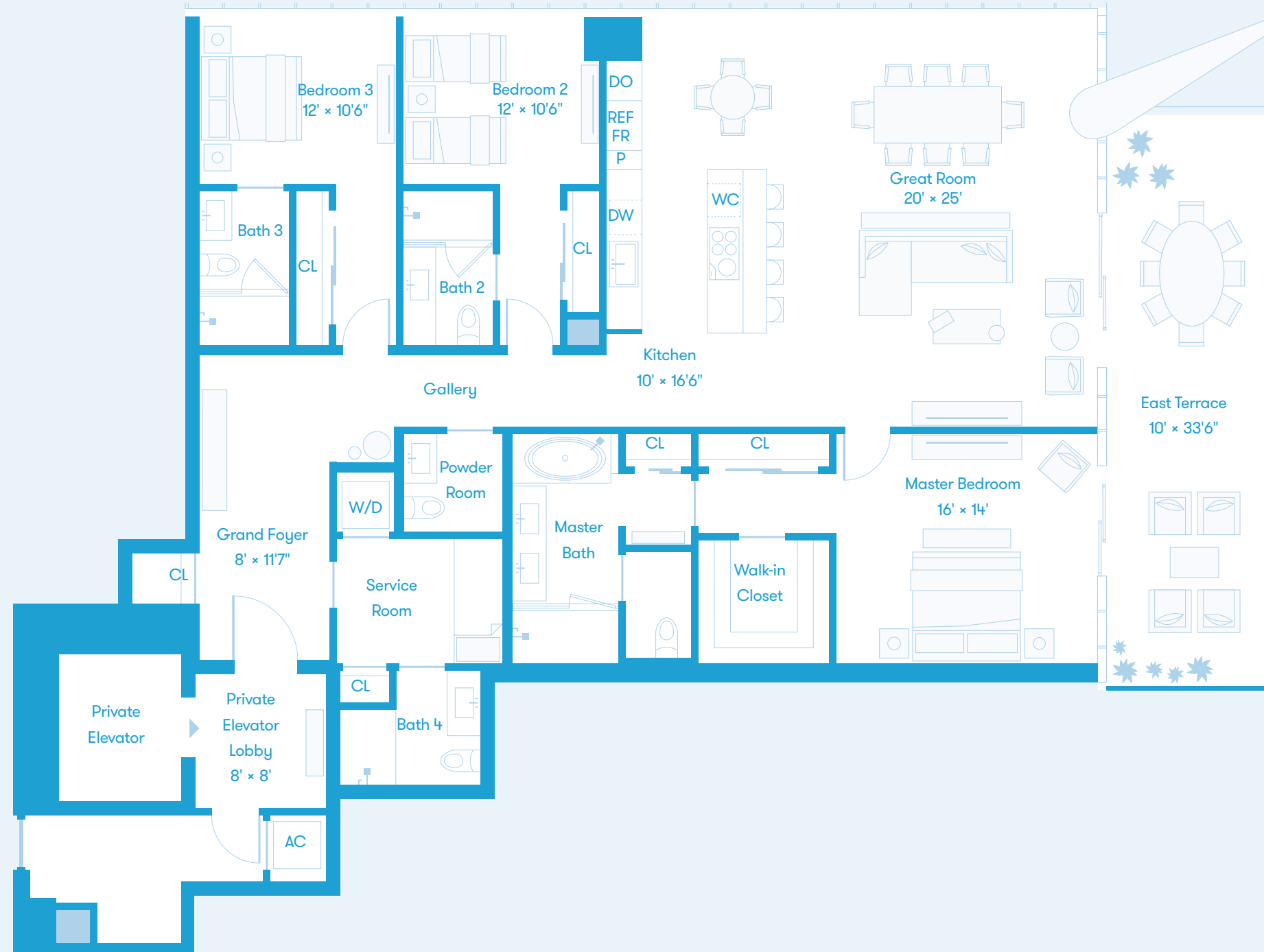
EXCLUSIVE MARKETING AND SALES BY FORTUNE DEVELOPMENT SALES

MISSONI baia MIAMI RESIDENCES

All depictions of matters of detail shown hereon, including, without limitation, items of finish, furniture and decoration, are conceptual only and are not necessarily included in the Unit. For a correct representation of the items included in the Unit, see the Purchase Agreement. Stated dimensions shown hereon are approximate and are measured to the exterior face of exterior walls and to the center line of demising walls. This method of measurement varies from, and is larger than, the dimensions that would be determined by using the description and definition of the "Unit" set forth in the Declaration (which generally only includes the interior airspace between the perimeter walls and excludes interior structural components). Note that measurements of rooms set forth on this floor plan are generally taken at the greatest points of each given room (as if the room were a perfect rectangle), without regard for any cutouts. Accordingly, the area of the actual room will typically be smaller than the product obtained by multiplying the stated length times width. All dimensions are approximate and may vary with actual construction.

Tower Residence NE Floors 38 - 56 3 Bedrooms 4.5 Baths 2,552 Sq Ft / 237 Sq M Interior 351 Sq Ft / 33 Sq M Exterior

North ↑



Biscayne Bay

DEVELOPED BY OKO GROUP Cain International OB GROUP

EXCLUSIVE MARKETING AND SALES BY FORTUNE DEVELOPMENT SALES

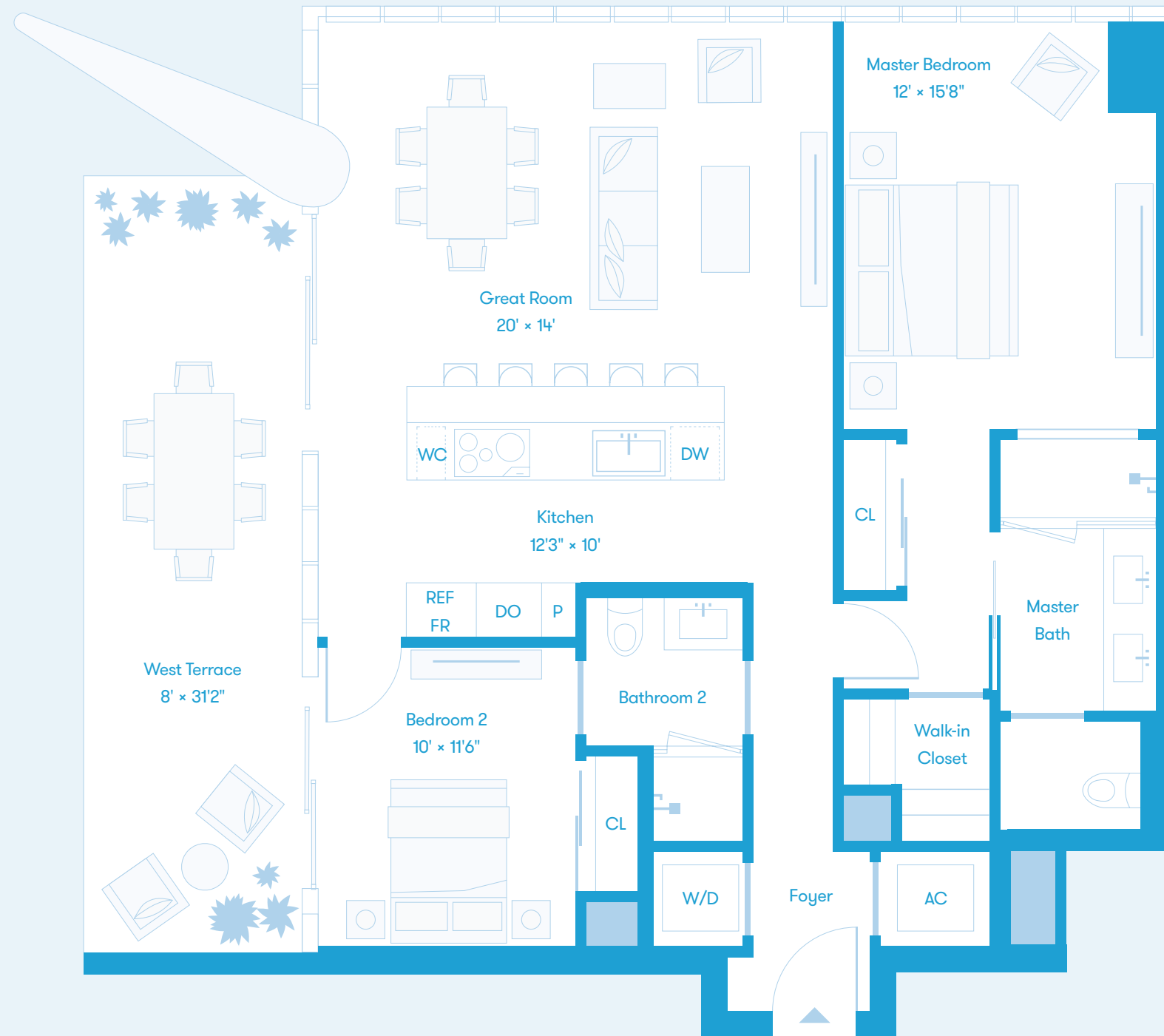
MISSONI baia MIAMI RESIDENCES

All depictions of matters of detail shown hereon, including, without limitation, items of finish, furniture and decoration, are conceptual only and are not necessarily included in the Unit. For a correct representation of the items included in the Unit, see the Purchase Agreement. Stated dimensions shown hereon are approximate and are measured to the exterior face of exterior walls and to the center line of demising walls. This method of measurement varies from, and is larger than, the dimensions that would be determined by using the description and definition of the "Unit" set forth in the Declaration (which generally only includes the interior airspace between the perimeter walls and excludes interior structural components). Note that measurements of rooms set forth on this floor plan are generally taken at the greatest points of each given room (as if the room were a perfect rectangle), without regard for any cutouts. Accordingly, the area of the actual room will typically be smaller than the product obtained by multiplying the stated length times width. All dimensions are approximate and may vary with actual construction.



Tower Residence NW Floors 38 - 56 2 Bedrooms 2 Baths 1,257 Sq Ft / 117 Sq M Interior 247 Sq Ft / 23 Sq M Exterior

North ↑



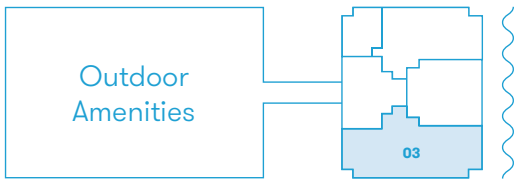
Biscayne Bay

DEVELOPED BY OKO GROUP Cain International OB GROUP

EXCLUSIVE MARKETING AND SALES BY FORTUNE DEVELOPMENT SALES

MISSONI baia MIAMI RESIDENCES

All depictions of matters of detail shown hereon, including, without limitation, items of finish, furniture and decoration, are conceptual only and are not necessarily included in the Unit. For a correct representation of the items included in the Unit, see the Purchase Agreement. Stated dimensions shown hereon are approximate and are measured to the exterior face of exterior walls and to the center line of demising walls. This method of measurement varies from, and is larger than, the dimensions that would be determined by using the description and definition of the "Unit" set forth in the Declaration (which generally only includes the interior airspace between the perimeter walls and excludes interior structural components). Note that measurements of rooms set forth on this floor plan are generally taken at the greatest points of each given room (as if the room were a perfect rectangle), without regard for any cutouts. Accordingly, the area of the actual room will typically be smaller than the product obtained by multiplying the stated length times width. All dimensions are approximate and may vary with actual construction.



\* On level 38, Bath 2 & 4 have slightly modified configurations, affecting the width of Bedrooms 2 & 4.

